



TL07 Turf Maintenance Lift

7,000 lbs. CAPACITY LAWN and MOWER SERVICE LIFTS

The BEST Solution for Mower and Lawn Care Equipment Repairs.



Shown: TL07 / 7,000 lbs.
(3175K) capacity symmetric
turf maintenance lift

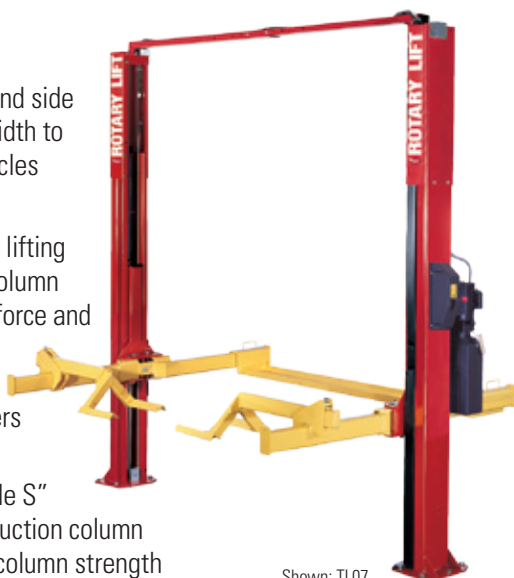
Productivity Features

- Highest rise available in the market with extended height models
- Can accommodate a 30" (762mm) wheelbase vehicle
- Lift capacity to handle the largest mowers
- Versatile small wheel attachment
- Lift can accommodate both three and four-wheel turf equipment
- Can also be used for golf cart maintenance
- Wheel engaging - chocks wheels automatically
- Unique design permits easy access to reels and hydraulic systems

Low-profile column
base minimizes floor
obstructions.

FEATURES:

- Drive-over ramps and side rails provide the width to support wider vehicles during approach.
- Dual high-pressure lifting cylinders in each column provide maximum force and smooth operation with plenty of power to lift mowers to capacity.
- The original "Double S" single piece construction column design maximizes column strength
- Rotary® power units are designed and built by Rotary, for Rotary lifts.



Shown: TL07
7,000 lbs. (3175K) capacity
turf maintenance lift

Options and Accessories

The TL07 can easily be converted to lift passenger cars and light trucks.

N257KITYL - FA arm kit to convert

TL07 200/400 series lifts (7,000 lbs. capacity)

N2206YL - FA arm kit to convert

TL07 500 series lifts (7,000 lbs. capacity)



#FA5911BK

Air / Utility Box

Mounts easily on any column and provides quick access to utilities

- Two 110v electric outlets and air connection
- The filter/regulator/lubricator extends the life of air tools

Tool Holder

This patented tool holder keeps air guns and other tools within easy reach. This mounts easily in pre-drilled holes already tapped in the two-post column.



#FA5191EBK



TECH LIGHT™ Line Light 2

Attach the 2 ultra slim light wands to columns for effective, efficient 2-post lighting where you need it. Supplied with 4 magnetic clips for easy positioning.

#FA5701

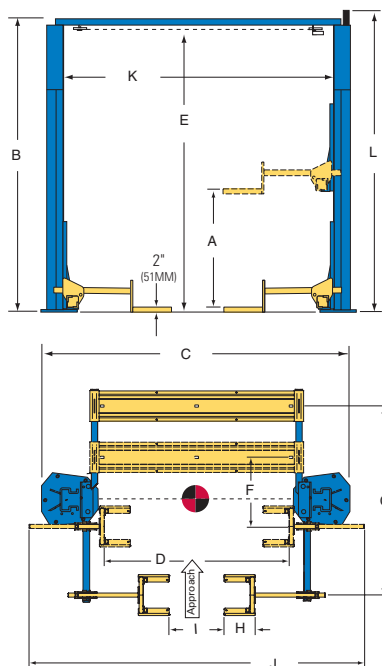
Specifications

TL07

TL07-EH2

TL07-EH4

| | | | |
|---|---------------------|---------------------|---------------------|
| A. Rise* | 68" (1727mm) | 71" (1803mm) | 71" (1803mm) |
| B. Height Overall** | 11' 8" (3556mm) | 13' 8" (4166mm) | 15' 8" (4776mm) |
| C. Width Overall** (outside of base plate) | 11' 5 5/8" (3496mm) | 11' 5 5/8" (3496mm) | 11' 5 5/8" (3496mm) |
| D. Drive-Thru Clearance | 91 1/2" (2324mm) | 91 1/2" (2324mm) | 91 1/2" (2324mm) |
| E. Floor To Overhead Switch | 11' 2 3/4" (3423mm) | 13' 2 3/4" (4032mm) | 15' 2 3/4" (4642mm) |
| F. Min. Wheelbase | 30" (762mm) | 30" (762mm) | 30" (762mm) |
| G. Max. Wheelbase | 88" (2235mm) | 88" (2235mm) | 88" (2235mm) |
| H. Fork Length | 12 7/16" (316mm) | 12 7/16" (316mm) | 12 7/16" (316mm) |
| I. Min. Inside Tires | 20 1/2" (521mm) | 20 1/2" (521mm) | 20 1/2" (521mm) |
| J. Extended Width | 13' 9" (4191mm) | 13' 9" (4191mm) | 13' 9" (4191mm) |
| K. Inside Columns | 114 1/2" (2908mm) | 114 1/2" (2908mm) | 114 1/2" (2908mm) |
| L. Cylinder Height (Full Rise) | 11'10 3/4" (3626mm) | 12' 4 3/4" (3778mm) | 12' 4 3/4" (3778mm) |
| Lifting Capacity | 7000lbs. (3175kg) | 7000lbs. (3175kg) | 7000lbs. (3175kg) |
| Motor | 2 HP | 2 HP | 2 HP |
| Voltage Single Phase † | 208v-230v | 208v-230v | 208v-230v |
| Time of Full Rise | 45 seconds | 45 seconds | 45 seconds |
| Ceiling Height Required | 12' (3658mm) | 13' 9" (4191mm) | 15' 9" (4801mm) |



* Rise measures floor to adapter in highest position at full cylinder stroke

** Overall heights and widths reflect standard settings. Alternate settings may be available. Consult factory for details.

† Optional 3 phase electrical available.



Rotary Lift

2700 Lanier Drive
Madison, IN 47250, USA



North / South America Contact Information

Sales: p 800.640.5438
e userlink@rotarylif.com
Tech. Support: p 800.445.5438
e techlink@rotarylif.com

Global Contact Information

USA: 1.812.273.1622
Canada: 1.905.812.9920
Latin America / Caribbean: 1.812.273.1622
Brazil: +55.11.4534.1995

Assistance for Government Purchasing

Government Sales: 800.445.5438 X5655

For additional world wide contact information and a complete guide to our product offering, visit us on the web at **rotarylif.com**.



Lit# TL07_2015.11 (SUPERSEDES Lit# TL07_2011.08)

©2015 VEHICLE SERVICE GROUP™, Printed in U.S.A., All Rights Reserved. Unless otherwise indicated, ROTARY LIFT, VEHICLE SERVICE GROUP™, DOVER and all other trademarks are property of Dover Corporation and its affiliates.



Contract No. 061015-RRL